

■ Repeatability and Linearity

Fig. 4 shows the repeatability (peak area and retention time) for the 1 μ g/L standard solution with an injection volume of 100 μ L. At 1/10 the criteria value of 0.01 mg/L, good reproducibility is obtained.

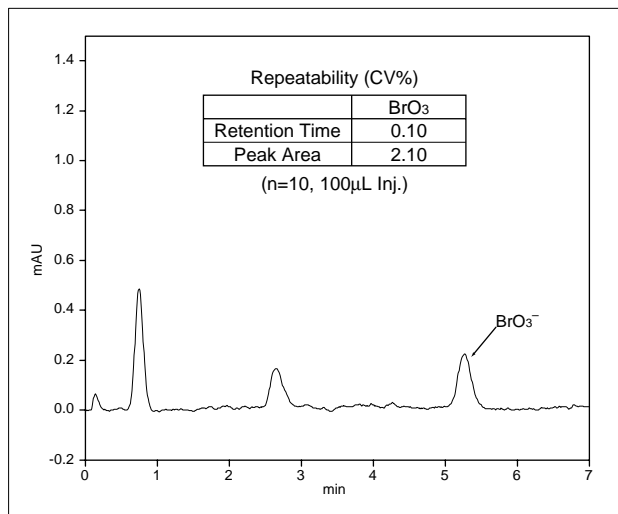


Fig.4 Repeatability of Standard Bromate(1 μ g/L)

Fig. 5 shows the calibration curve with the concentration range of 0.5 – 100 μ g/L. Good linearity is obtained also in the concentration range that is higher than that specified in the announced test method.

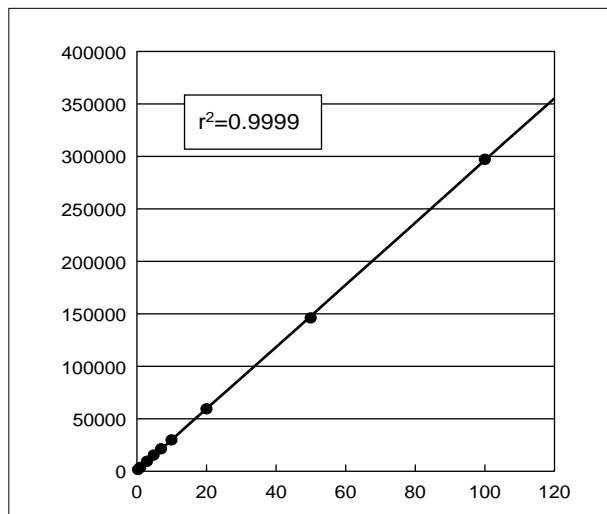


Fig.5 Calibration curve(0.5-100 μ g/L)

■ Analysis of Tap Water

Fig. 6 shows the analysis result based on a 200 μ L injection of tap water. Fig. 7 shows a chromatogram of

this tap water to which the bromate ion was added to bring the concentration to 1 μ g/L.

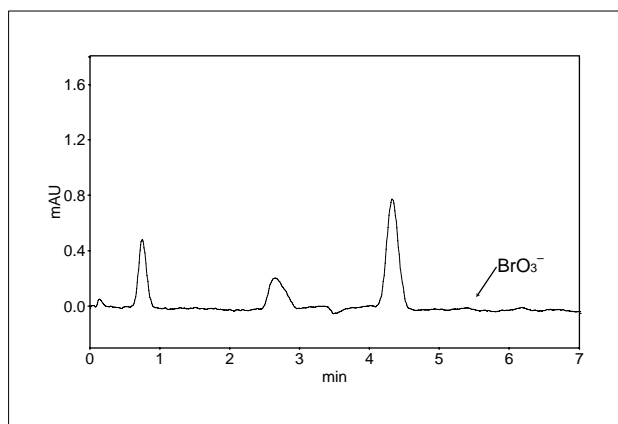


Fig.6 Chromatogram of Tap Water

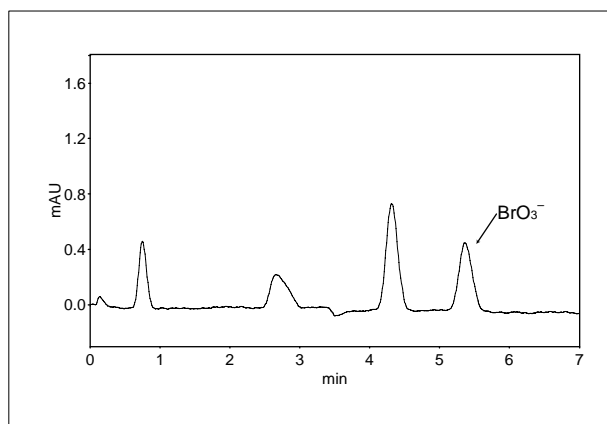


Fig.7 Chromatogram of Tap Water(Bromate1 μ g/L spiked)