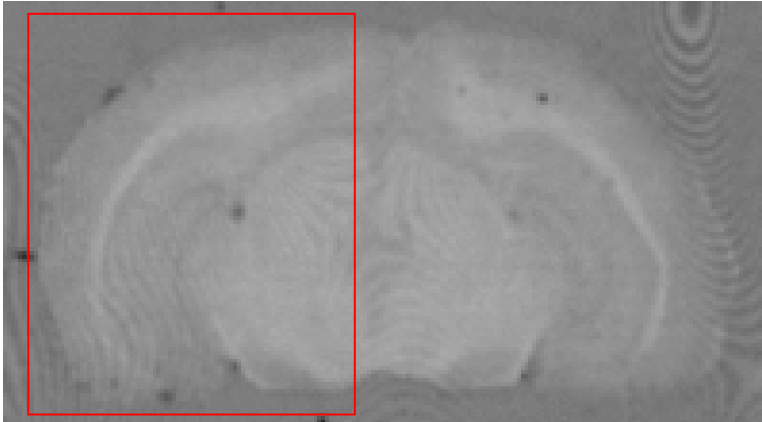
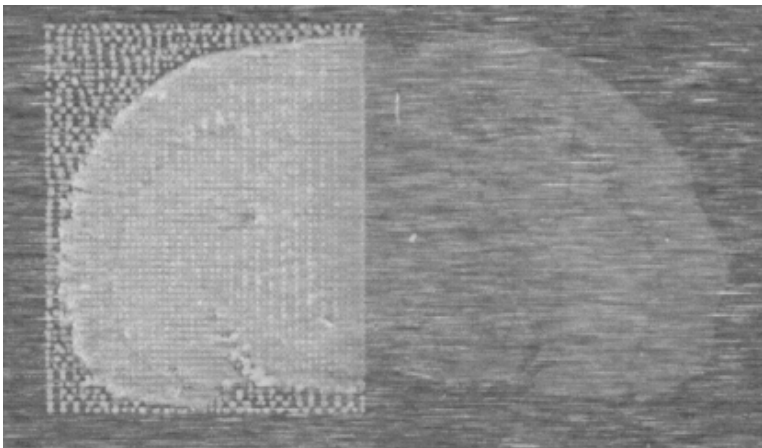


## Deposition of Matrix onto Mouse Brain Tissue Section



### Deposition of Matrix

Solution of CHCA matrix (500  $\mu\text{L}$ ) at a concentration of 5 mg/mL (75% MeOH) was microdispensed onto tissue section 15 times at 150  $\mu\text{m}$  pitch of a center to center of print positions.



### MS analysis

MS measurement was performed under on reflectron mode/negative mode (50 shots/positions, 120  $\mu\text{m}$  pitch of a center to center).