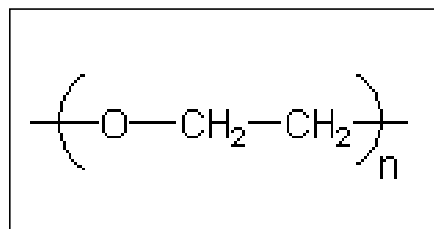
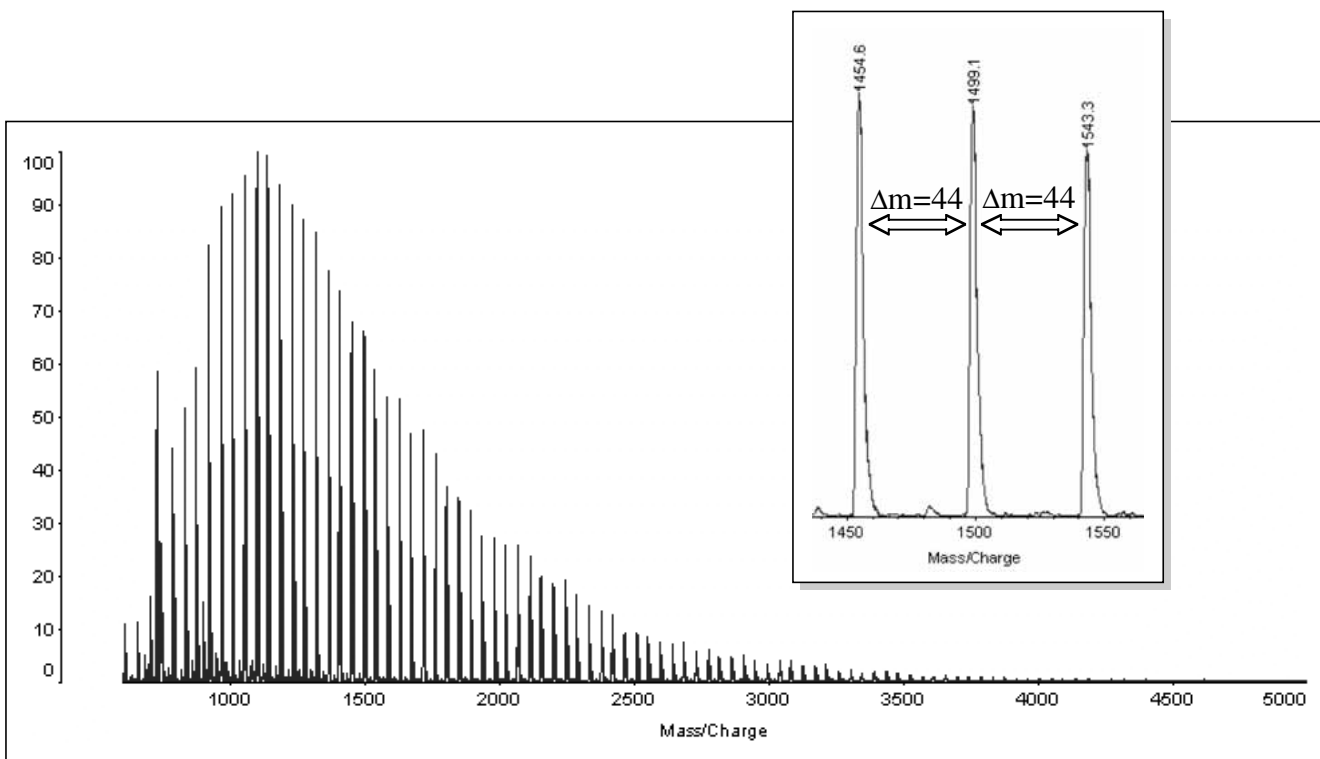


Analysis of Polyethylene Glycol using MALDI-TOFMS

The figure below shows the analysis result of polyethylene glycol (PEG) with an average molecular weight of 1500 using AXIMA-CFR. The peaks with unit intervals equivalent to the PEG monomer (upper Fig.) molecular weight ($\Delta m=44$) can be observed.

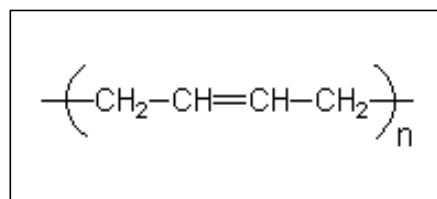


PEG Monomer Unit



Analysis of Polybutadiene using MALDI-TOFMS

The figure below shows the analysis result of polybutadiene (PB) with an average molecular weight of 2800 using AXIMA-CFR. Peaks are observed with intervals corresponding to the monomer molecular weight ($\Delta m=54$) of PB (upper Fig.).



PB Monomer Unit

