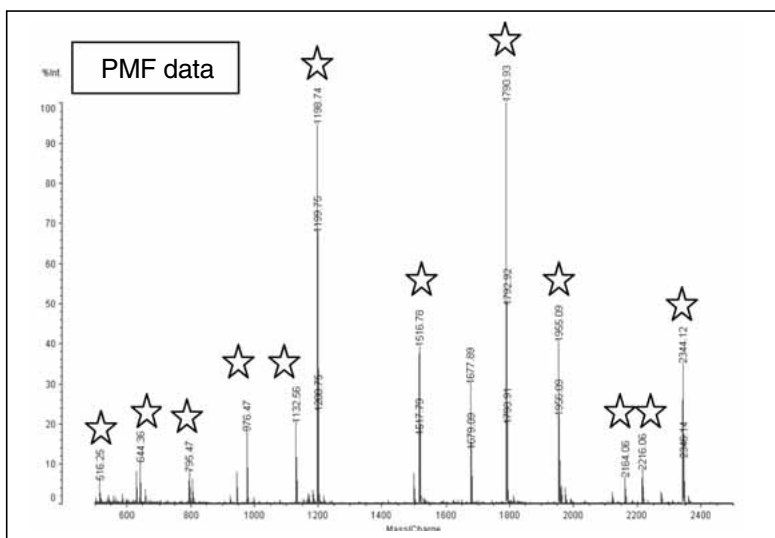


Protein Identification by Library Search

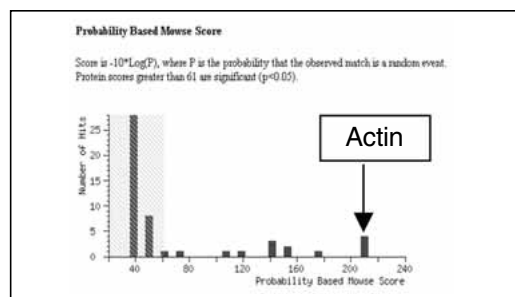
- Use of MS-Tag Method by Seamless PSD Analysis -

Sample provided by : Dr. Nashimoto; Niigata University of Pharmacy and Applied Life Sciences, Department of Applied Microbiology, Laboratory of Biogenetics

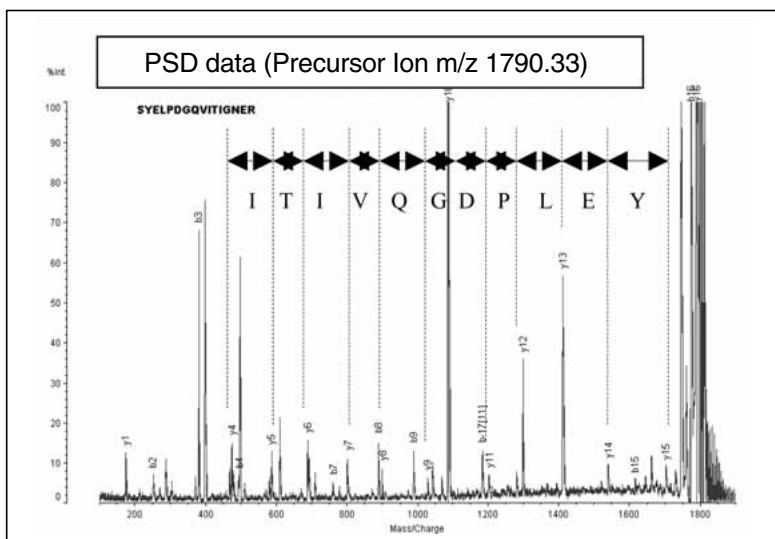


MALDI-TOFMS (AXIMA-CFR) Spectrum

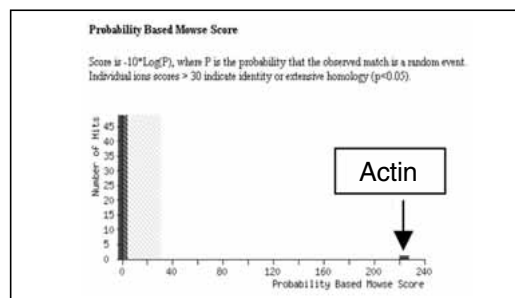
The target compound was identified as human actin. Further, from MS/MS analysis using PSD, the sequence of 11 out of 16 amino acids were ascertained. AXIMA-CFR provides a solution for protein research with high-accuracy and resolution.



Library Search Result from MS Data (PMF Method)



MALDI-TOFMS (AXIMA-CFR) Spectrum



Library Search Result from MS/MS Data (MS-Tag Method)