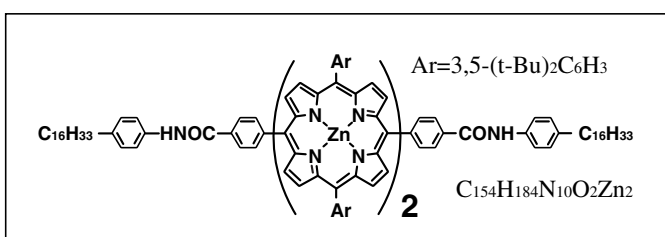
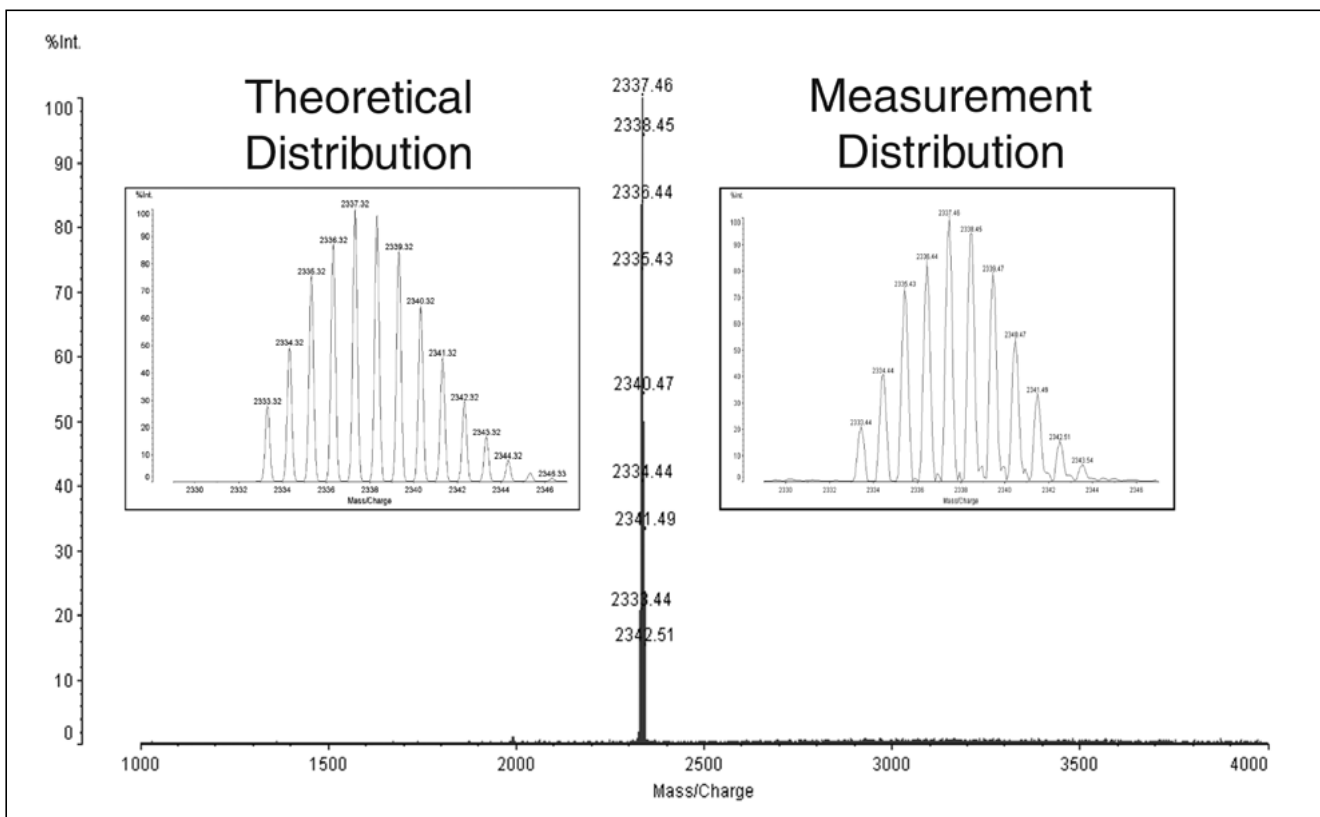


Analysis Example of Porphyrin Metal Bond

Sample provided by : Dr. Hiroshi Imahori,; Kyoto University Faculty of Engineering,
Department of Molecular Engineering
Physical Properties Physical Chemistry Lecture Applied Molecular Science Field



The figure at left shows an analysis example of the structural formula of the metal complex. High resolution measurement was performed with AXIMA-CFR. The target compound was confirmed not only from the molecular weight, but from the isotope distribution as well.



Reference : Stepwise Charge Separation and Charge Recombination in Ferrocene-meso, meso-Linked Porphyrin Dimer-Fullerene Triad, Hiroshi Imahori, Shunichi Fukuzumi et al., J. Am. Chem. Soc., 124, 5165-5174 (2002).